



Recommended Lipsticks

Ivory 100, 104, 105, Ivory 1 and Ivory .5 Skin Tones



Apricot Glaze



Toffee



Shell



Icy Peach



Sweet Nectar



Sunset



Sunny Citrus



Pink Passion



Pink Satin



Dusty Rose



Boysenberry



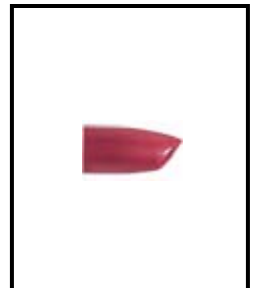
Frosted Rose



Whipped Berries



Berry Kiss



Apple Berry



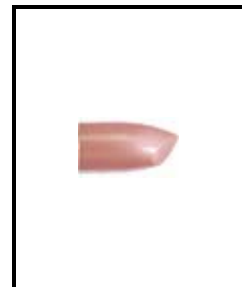
Black Cherry



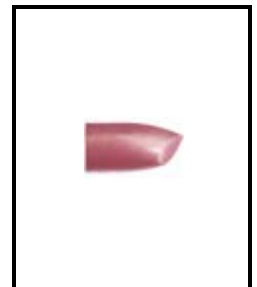
Red



Hibiscus



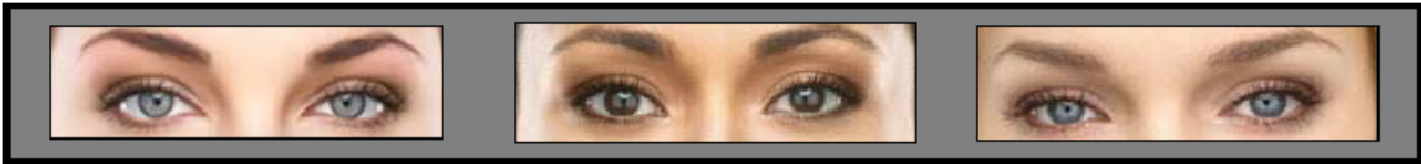
Sheer Blush



Pink Shimmer



Sunlit Sand



Recommended Lipsticks

Ivory 200, 204, 205, Ivory 1 and Ivory 2 Skin Tones



Apricot Glaze



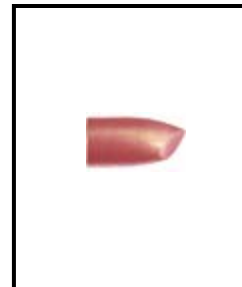
Toffee



Shell



Icy Peach



Sweet Nectar



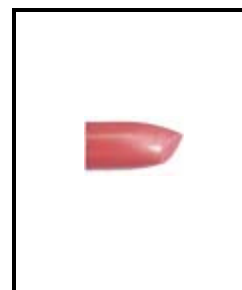
Sunset



Sunny Citrus



Pink Passion



Pink Satin



Dusty Rose



Boysenberry



Frosted Rose



Whipped Berries



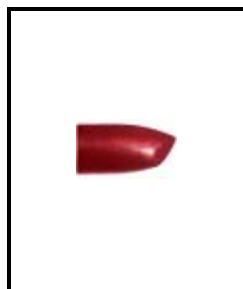
Berry Kiss



Apple Berry



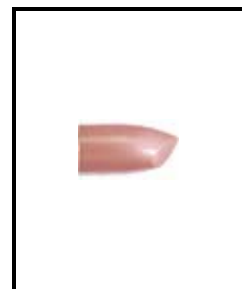
Black Cherry



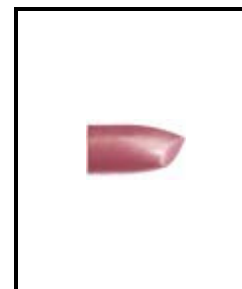
Red



Hibiscus



Sheer Blush



Pink Shimmer



Whisper



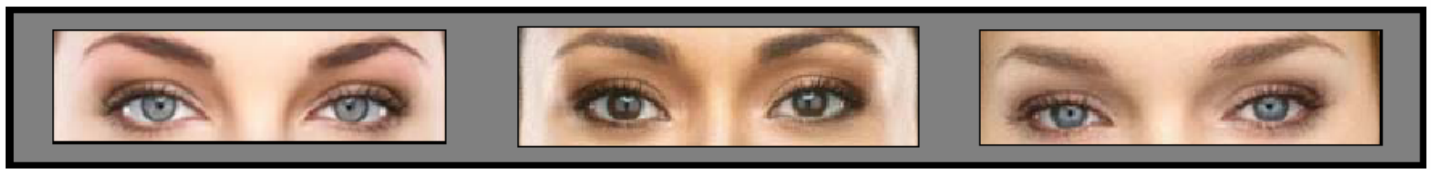
Blaze



Sunlit Sand



Raisinberry



Recommended Lipsticks

Beige 300, 304, 305, Ivory 2, Beige 1 and Beige .5 Skin Tones



Apricot Glaze



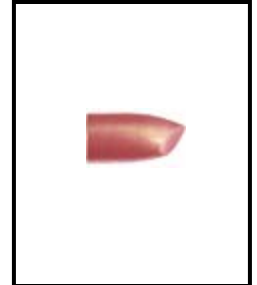
Toffee



Shell



Icy Peach



Sweet Nectar



Sunset



Sunny Citrus



Pink Passion



Pink Satin



Dusty Rose



Boysenberry



Frosted Rose



Whipped Berries



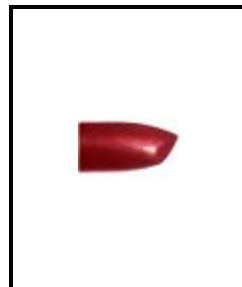
Berry Kiss



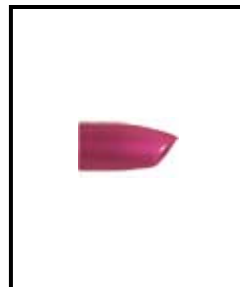
Apple Berry



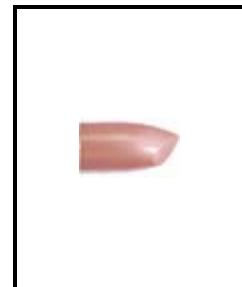
Black Cherry



Red



Hibiscus



Sheer Blush



Pink Shimmer



Not recommended for
Beige 305.

Whisper



Not recommended for
Beige 304, 305.

Blaze



Sunlit Sand

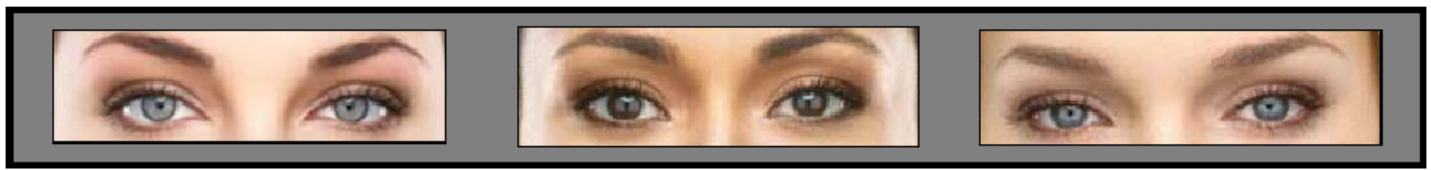


Raisinberry



Recommended only for
Beige 302 and Beige 1.

Midnight Red

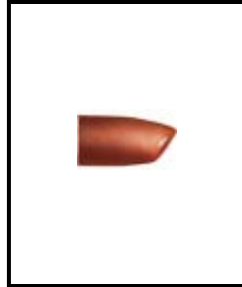


Recommended Lipsticks

Beige 400, 402, 404, Beige 1, Beige 2, Beige .5 and Beige 1.5 Skin Tones



Apricot Glaze



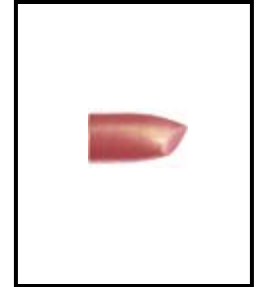
Toffee



Shell



Icy Peach



Sweet Nectar



Sunset



Sunny Citrus



Pink Passion



Pink Satin



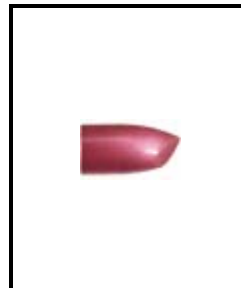
Dusty Rose



Boysenberry



Frosted Rose



Whipped Berries



Berry Kiss



Apple Berry



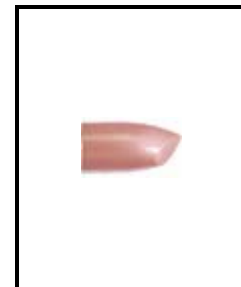
Black Cherry



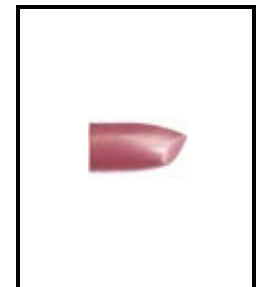
Red



Hibiscus



Sheer Blush



Pink Shimmer



Whisper



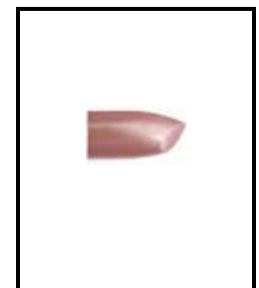
Blaze



Sunlit Sand



Raisinberry



Mocha Freeze



Recommended Lipsticks

Bronze 500, 504, 507, Bronze 1, Beige 2, Bronze 2 and Bronze 4 Skin Tones



Whisper



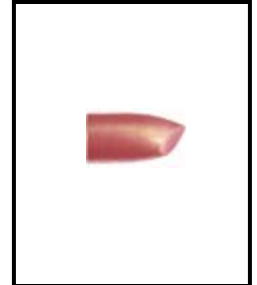
Toffee



Blaze



Icy Peach



Sweet Nectar



Sunset



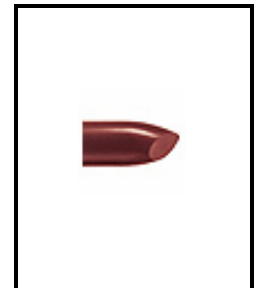
Sunny Citrus



Pink Passion



Raisinberry



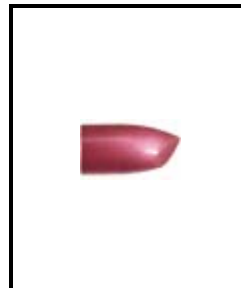
Midnight Red



Boysenberry



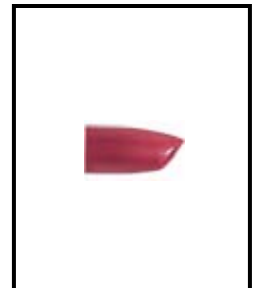
Maple



Whipped Berries



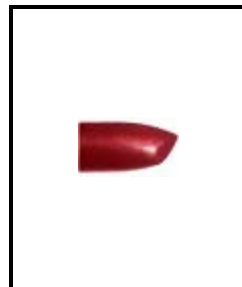
Berry Kiss



Apple Berry



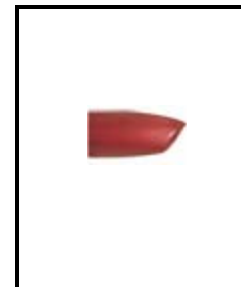
Black Cherry



Red



Hibiscus



Amber Suede



Copper Star



Gingerbread



Bronzed



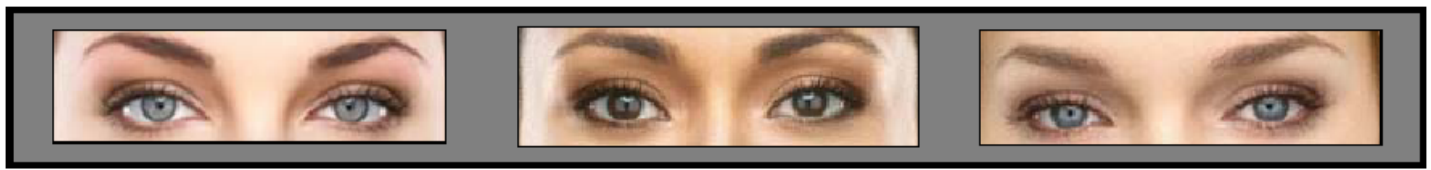
Nutmeg



Downtown Brown



Hot Mocha



Recommended Lipsticks

Bronze 600, 607, 708, 808, Bronze 3, Bronze 4 and Bronze 5 Skin Tones



Sunny Citrus



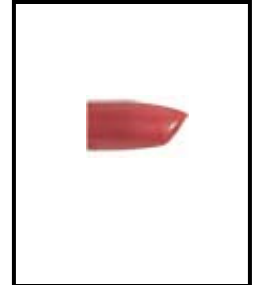
Raisinberry



Blaze



Whipped Berries



Gingerbread



Sunlit Sand



Amber Glow



Mocha Freeze



Nutmeg



Midnight Red



Boysenberry



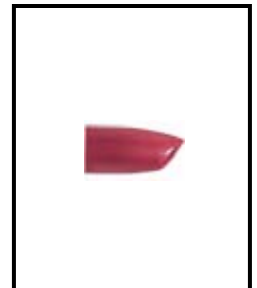
Maple



Rich Fig



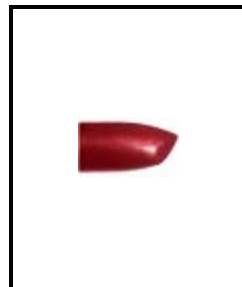
Berry Kiss



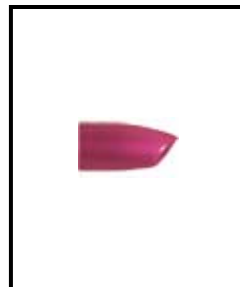
Apple Berry



Black Cherry



Red



Hibiscus



Amber Suede



Copper Star



Bronzed



Hot Mocha



Downtown Brown



Mary Kay NouriShine Lip Gloss



Beach Bronze



Berry Sparkle



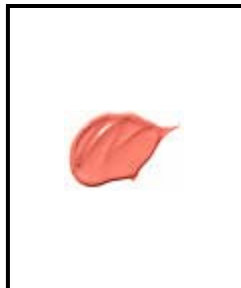
Coral Rose



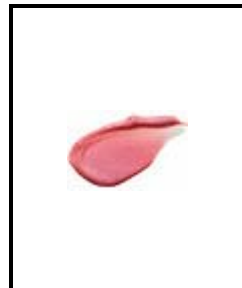
Cream & Sugar



Gold Rush



Melon Sorbet



Pink Diamonds



Starry



Sugarberry



Sweet Raisin

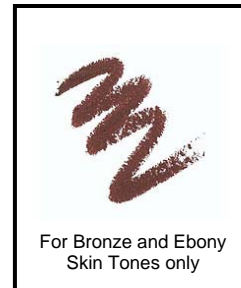


Fancy Nancy



Bronze Bliss

Lip Liners



For Bronze and Ebony
Skin Tones only

Cappuccino



Chocolate



Cinnamon



Coral



Dark Berry



For Bronze and Ebony
Skin Tones only

Dark Chocolate



Dusty Pink



Neutral



Pink



Plum



Raspberry