



*Before*

3 X 5  
VERTICAL PHOTOS  
WORK BEST

*After*

3 X 5  
VERTICAL PHOTOS  
WORK BEST

## LTD. ED.! Shimmering Style



Try a stunning, yet simple,  
look that easily goes from  
daytime to nighttime.



### GET THIS LOOK

- Denim Frost Mineral Eye Color
- Hazelnut Mineral Eye Color
- Shy Blush Mineral Cheek Color
- Coral Rose Lip Gloss
- I ♥ Black, Lash Love Mascara



MODEL NAME \_\_\_\_\_

OCCUPATION \_\_\_\_\_

PHONE \_\_\_\_\_ Home

\_\_\_\_\_ Work

\_\_\_\_\_ Cell

BEST TIME TO CALL \_\_\_\_\_

Email \_\_\_\_\_

HAIR COLOR \_\_\_\_\_

EYE COLOR \_\_\_\_\_

SKIN TYPE: combination ~ oily ~ dry

MY FAVORITE MARY KAY PRODUCTS

\_\_\_\_\_  
\_\_\_\_\_

*Before*

3 X 5  
VERTICAL PHOTOS  
WORK BEST

*After*

3 X 5  
VERTICAL PHOTOS  
WORK BEST

## LTD. ED.! Seaside Appeal



Make a subtle, sophisticated statement in this easy look.



### GET THIS LOOK

Midnight Star Mineral Eye Color  
Silver Satin Mineral Eye Color  
Sheer Bliss Cream Blush  
Dusty Rose Crème Lipstick  
I ♥ Black, Lash Love Mascara



MODEL NAME \_\_\_\_\_

OCCUPATION \_\_\_\_\_

PHONE \_\_\_\_\_ Home

\_\_\_\_\_ Work

\_\_\_\_\_ Cell

BEST TIME TO CALL \_\_\_\_\_

Email \_\_\_\_\_

HAIR COLOR \_\_\_\_\_

EYE COLOR \_\_\_\_\_

SKIN TYPE: combination ~ oily ~ dry

MY FAVORITE MARY KAY PRODUCTS

\_\_\_\_\_  
\_\_\_\_\_



## Casual Flair



Get set for a relaxing weekend getaway or a casual, elegant evening.



**EYES:** Spun Silk Eye Color  
 Silky Caramel Eye Color  
 Emerald Eye Color  
 Olive Eyeliner  
 Black Ultimate Mascara

**CHEEK:** Citrus Bloom Mineral Cheek Color

**LIPS:** Dusty Pink Lip Liner  
 Frosted Rose Crème Lipstick  
 Pink Diamonds Lip Gloss



**MODEL NAME** \_\_\_\_\_

**OCCUPATION** \_\_\_\_\_

**PHONE** \_\_\_\_\_ Home

\_\_\_\_\_ Work

\_\_\_\_\_ Cell

**BEST TIME TO CALL** \_\_\_\_\_

**Email** \_\_\_\_\_

**HAIR COLOR** \_\_\_\_\_

**EYE COLOR** \_\_\_\_\_

**SKIN TYPE:** combination ~ oily ~ dry

**MY FAVORITE MARY KAY PRODUCTS**

\_\_\_\_\_  
 \_\_\_\_\_





## Sunset Glow



Colors kissed by the sun  
add a radiant looking glow.



**EYES:** Hazelnut Eye Color  
Honey Spice Eye Color  
Amber Blaze Eye Color  
Navy Eyeliner  
Black Ultimate Mascara

**CHEEK:** Sunny Spice Mineral Cheek Color

**LIPS:** Raspberry Lip Liner  
Sunset Crème Lipstick  
Coral Rose Lip Gloss



**MODEL NAME** \_\_\_\_\_

**OCCUPATION** \_\_\_\_\_

**PHONE** \_\_\_\_\_ Home

\_\_\_\_\_ Work

\_\_\_\_\_ Cell

**BEST TIME TO CALL** \_\_\_\_\_

**Email** \_\_\_\_\_

**HAIR COLOR** \_\_\_\_\_

**EYE COLOR** \_\_\_\_\_

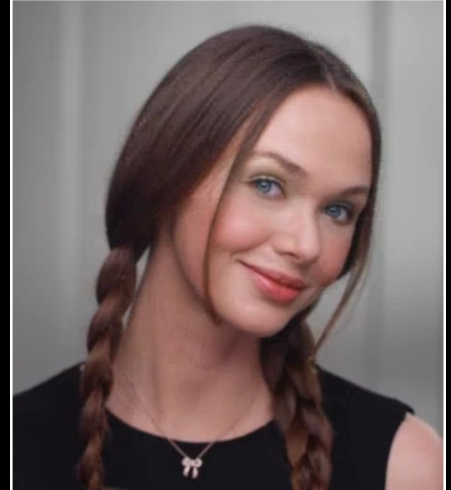
**SKIN TYPE:** combination ~ oily ~ dry

**MY FAVORITE MARY KAY PRODUCTS**

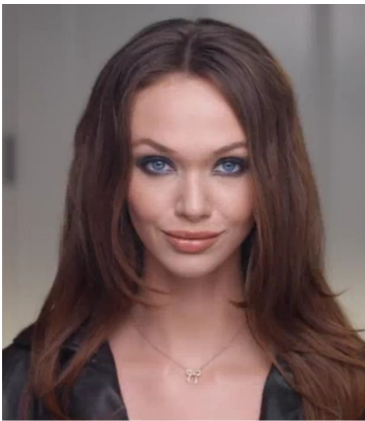
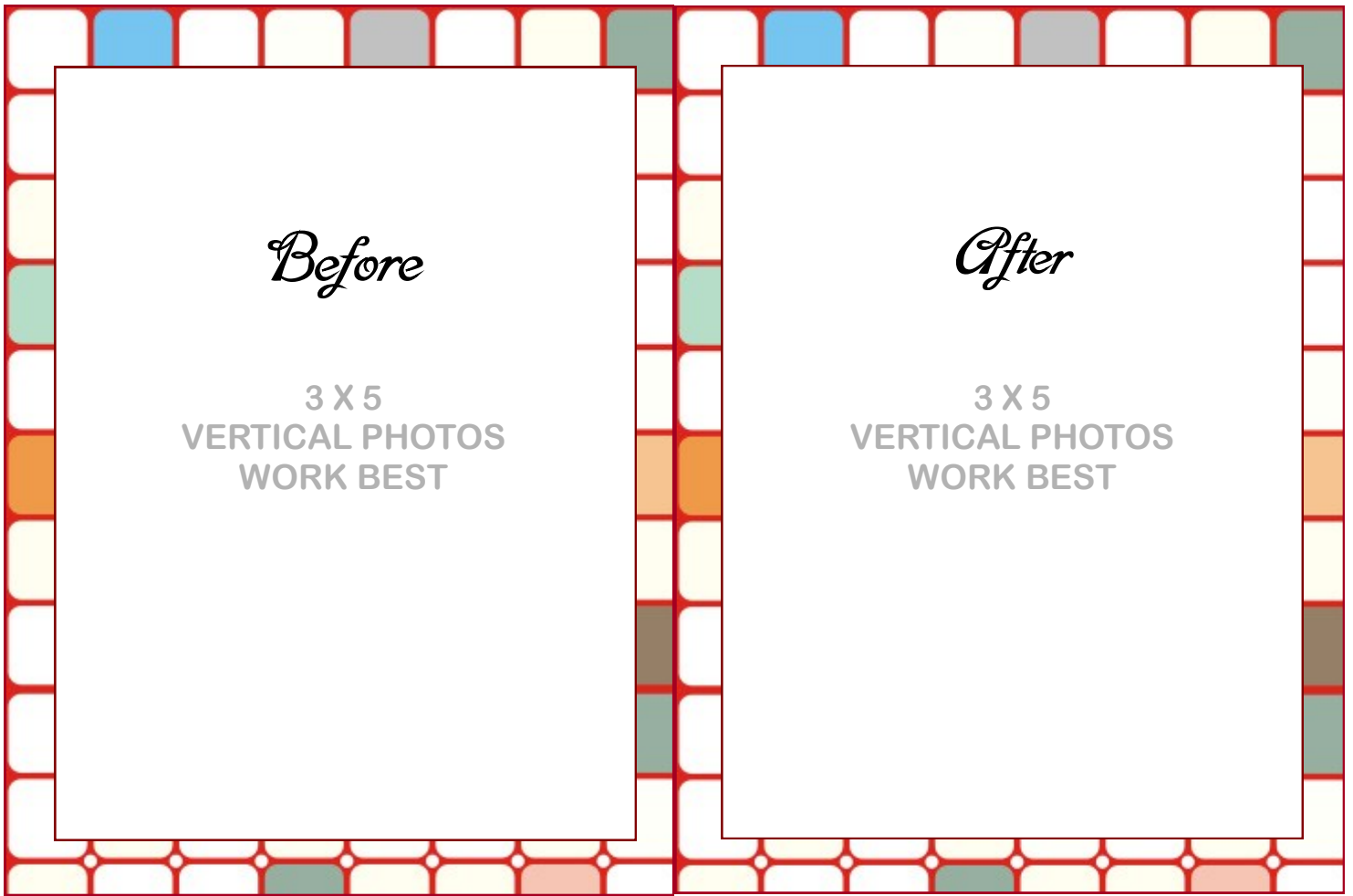
\_\_\_\_\_

\_\_\_\_\_

# Mary Kay® Compact/Color TV Commercial Looks



MARY KAY



**LOOK #1**

**EYES:** Sweet Cream Mineral Eye Color  
 Granite Eye Mineral Color  
 Coal Eye Mineral Color  
 Black/Noir Eyeliner

**CHEEK:** Sunny Spice Cheek Color

**LIPS:** Melon Sorbet Lip Gloss

**MODEL NAME** \_\_\_\_\_

**OCCUPATION** \_\_\_\_\_

**PHONE** \_\_\_\_\_ Home  
 \_\_\_\_\_ Work  
 \_\_\_\_\_ Cell

**BEST TIME TO CALL** \_\_\_\_\_

**Email** \_\_\_\_\_

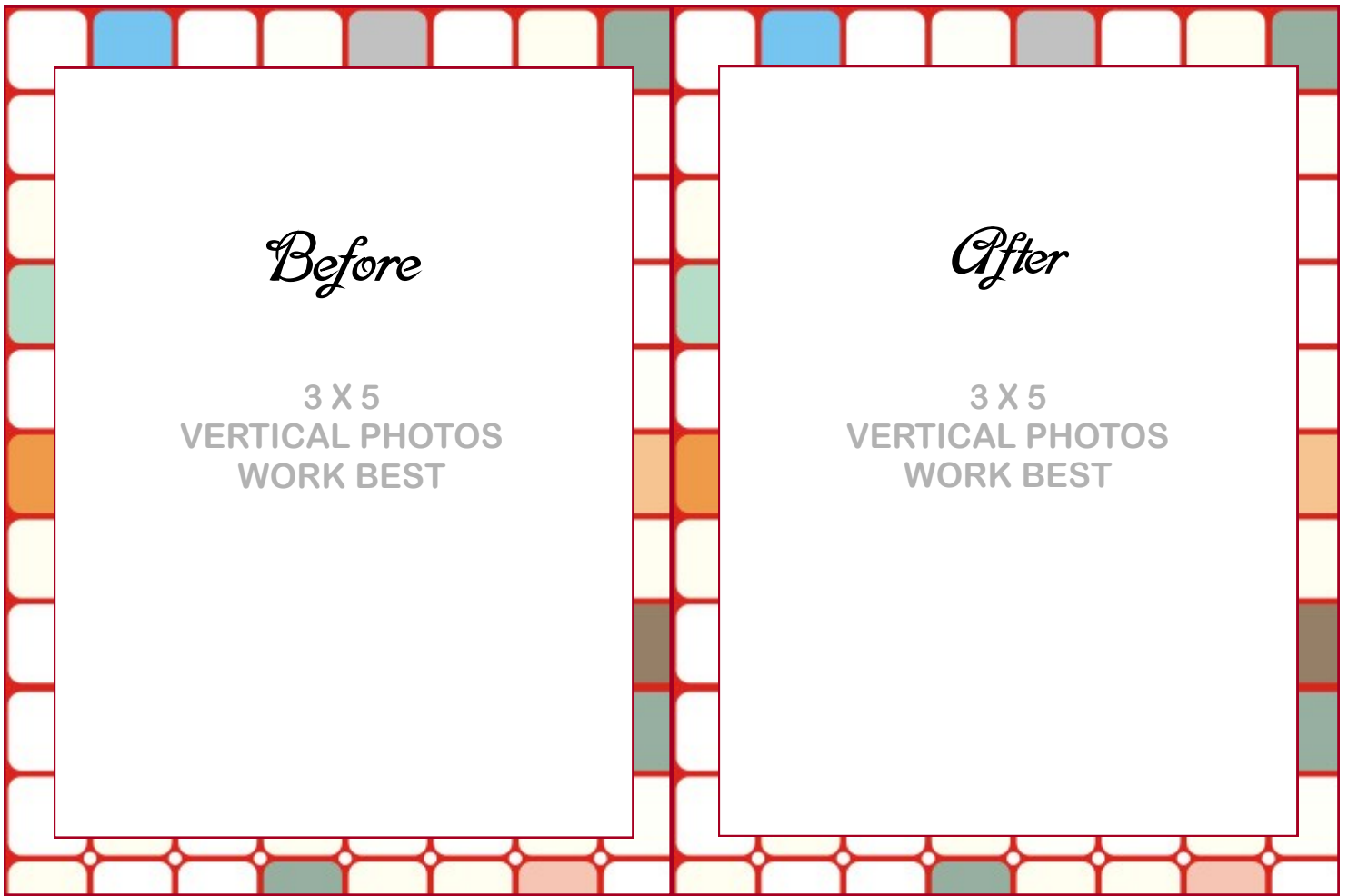
**HAIR COLOR** \_\_\_\_\_

**EYE COLOR** \_\_\_\_\_

**SKIN TYPE:** combination ~ oily ~ dry

**MY FAVORITE MARY KAY PRODUCTS**

\_\_\_\_\_  
 \_\_\_\_\_

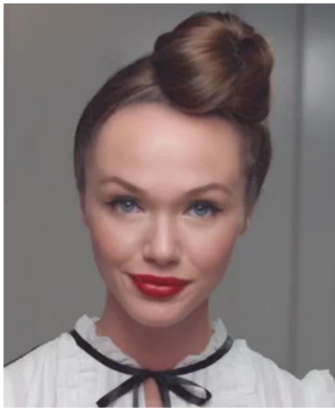


*Before*

3 X 5  
VERTICAL PHOTOS  
WORK BEST

*After*

3 X 5  
VERTICAL PHOTOS  
WORK BEST



MODEL NAME \_\_\_\_\_

OCCUPATION \_\_\_\_\_

PHONE \_\_\_\_\_ Home

\_\_\_\_\_ Work

\_\_\_\_\_ Cell

BEST TIME TO CALL \_\_\_\_\_

Email \_\_\_\_\_

**LOOK #2**

**EYES:** Silky Caramel Mineral Eye Color  
Honey Spice Mineral Eye Color  
Amber Blaze Mineral Eye Color  
Black/Noir Eyeliner

**CHEEK:** Shy Blush Mineral Cheek Color

**LIPS:** Red Lipstick



HAIR COLOR \_\_\_\_\_

EYE COLOR \_\_\_\_\_

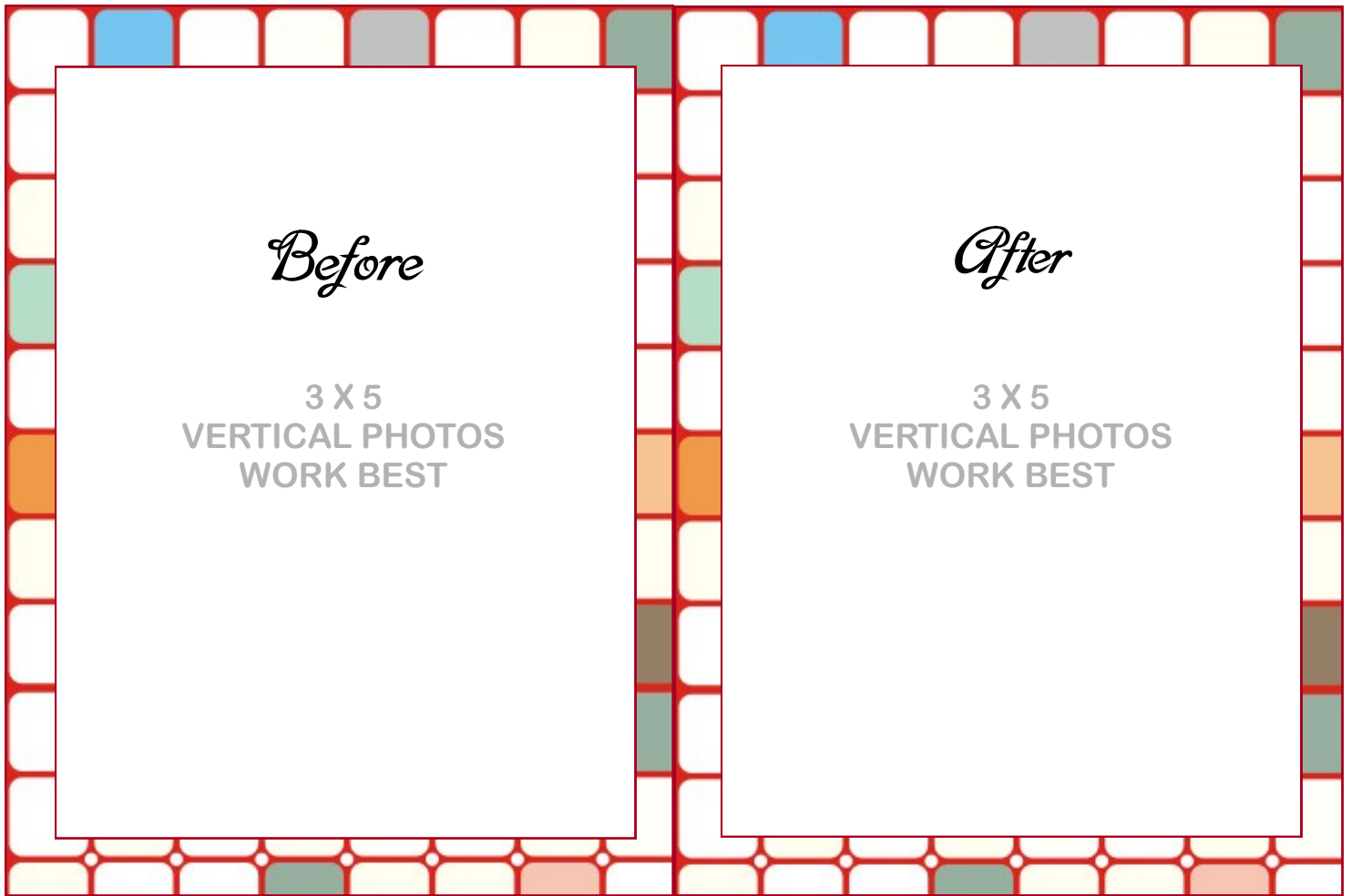
**SKIN TYPE:** combination ~ oily ~ dry

**MY FAVORITE MARY KAY PRODUCTS**

\_\_\_\_\_

\_\_\_\_\_





*Before*

3 X 5  
VERTICAL PHOTOS  
WORK BEST

*After*

3 X 5  
VERTICAL PHOTOS  
WORK BEST



MODEL NAME \_\_\_\_\_

OCCUPATION \_\_\_\_\_

PHONE \_\_\_\_\_ Home  
 \_\_\_\_\_ Work  
 \_\_\_\_\_ Cell

BEST TIME TO CALL \_\_\_\_\_

Email \_\_\_\_\_

HAIR COLOR \_\_\_\_\_

EYE COLOR \_\_\_\_\_

SKIN TYPE: combination ~ oily ~ dry

MY FAVORITE MARY KAY PRODUCTS

\_\_\_\_\_  
 \_\_\_\_\_

**LOOK #3**

**EYES:** Spun Silk Mineral Eye Color  
 Lemon Grass Mineral Eye Color  
 Ivy Garden Mineral Eye Color

**CHEEK:** Citrus Bloom Mineral Cheek Color

**LIPS:** Dusty Rose Crème Lipstick  
 Pink Diamonds Lip Gloss



# Color 101 Portfolio—Information Sheet

<u>Customer Name</u>	<u>Phone</u>	<u>Email</u>	<u>Appointment Date</u>	<u>Color Preferences</u>
1				
2				
3				
4				
5				
6				
7				
8				
9				
10				
11				
12				
13				
14				
15				
16				
17				
18				
19				
20				
21				
22				
23				
24				
25				